

## DIY Diagrams – Do It Yourself Wiz-Blox



For **100+ Puzzle and Answers** get the **Free WizBlox App** or click “Puzzles” at **WizBlox.com**

### Instructions

1. It is easier to paint, draw or color the Wiz-Blox diagrams **before** they are folded.
  - ✓ **Puzzles shapes** are easier to see when all the Blox are the same color.
  - ✓ **But**, design and stories can add to your **creative Fun !!** (Hmm...?)
2. Remove the Wiz-Blox diagram from its frame.
3. Fold on the dotted lines.
4. Glue the glue-tabs to the **inside** the 3D shapes.

### Your creativity

**You** can make over 100,000 different 3D physical shapes with just one Wiz-Blox set.  
With **more** sets you can build even more amazing shapes and puzzles.

### Experience Math

**Math** is the study of **objects** and **relationships** - and Wiz-Blox is a special set of **objects** and **relationships** that **you** can assemble to demonstrate, in multi-sensory ways, the physical reality of math concepts.

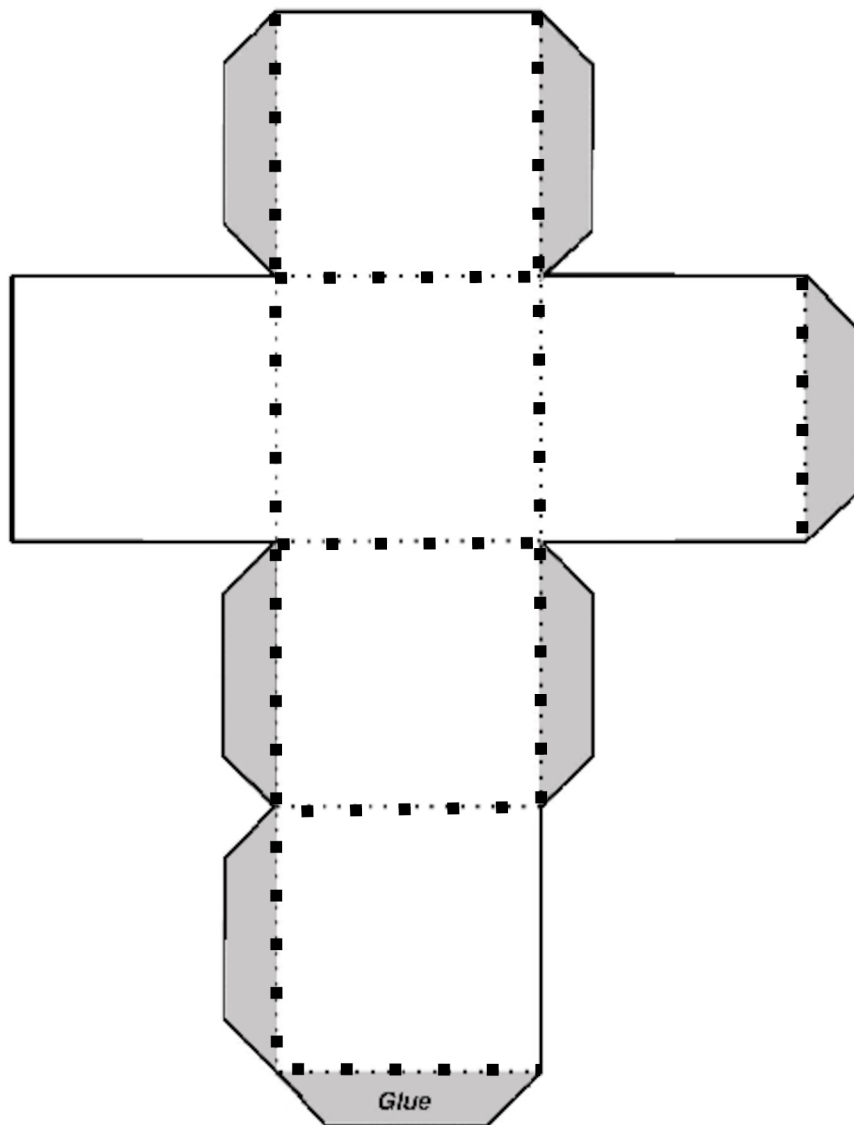
### The Wiz-Math Teachers Guide

The Teacher's Guide shows how **you** can use Wiz-Blox from **Pre-k to grade 12** to make math understandable and **Fun**. It is aligned with the Common Core.

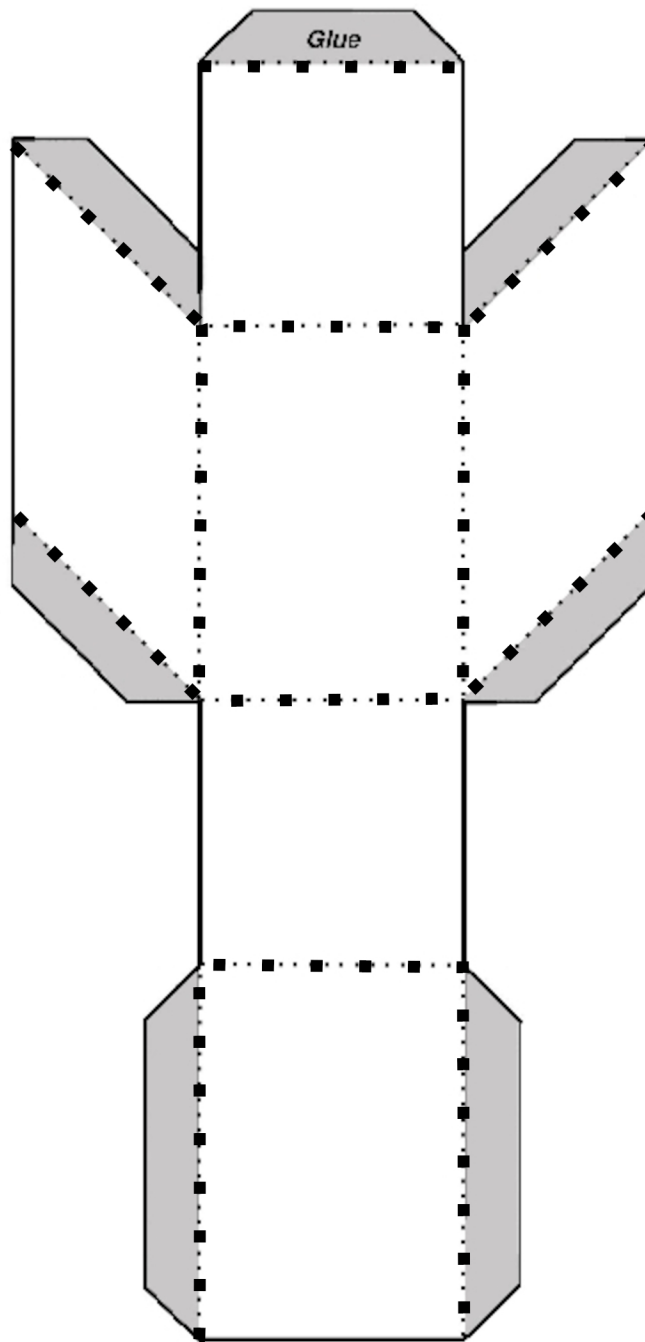
### Please

- ✓ Email [wizmath@wizblox.com](mailto:wizmath@wizblox.com) for more information on *Wiz-Math*, *Wiz-Blox*, *Wiz-Dek Math Games*, *Wiz-Dice* and other **creative learning tools**.
- ✓ Email photos and info about **your** Wiz-Blox **experiences** to [photos@wizblox.com](mailto:photos@wizblox.com)
- ✓ Email other **comments** and **suggestions** to [info@wizblox.com](mailto:info@wizblox.com)

# *Cube*

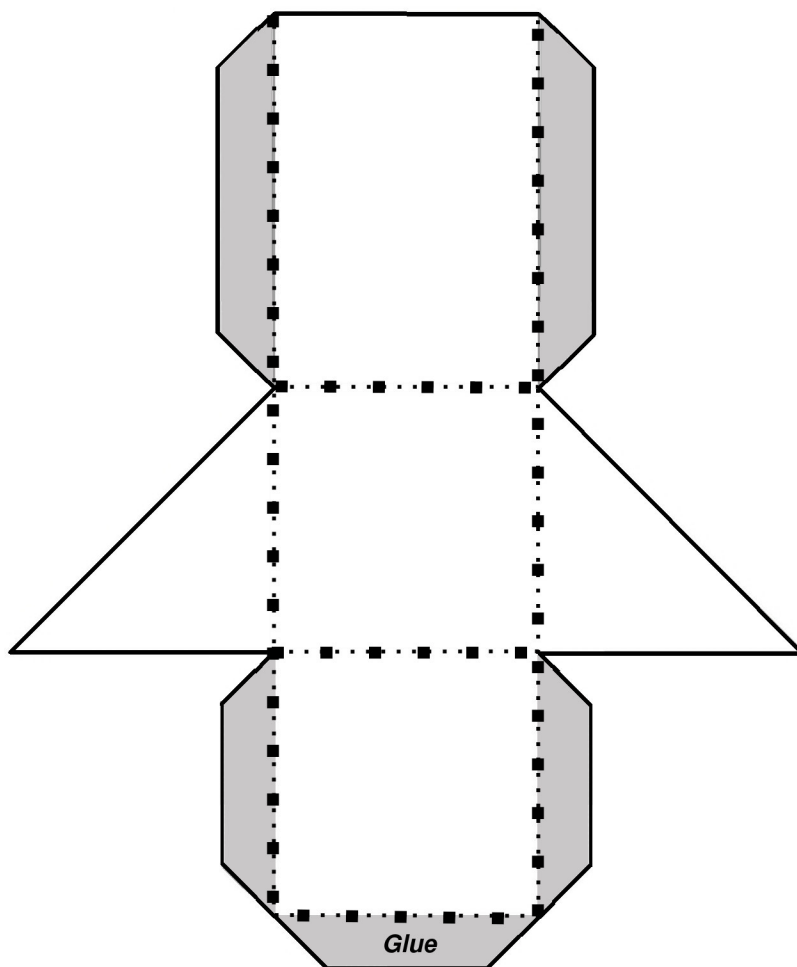


# *Parallelepiped*



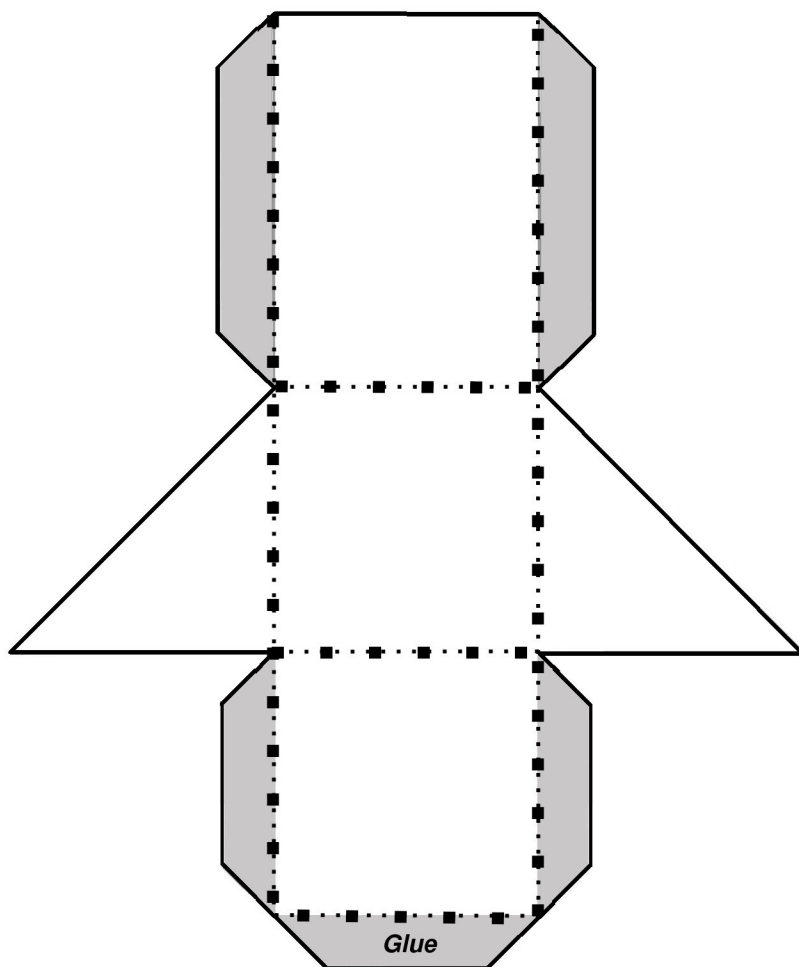
# ***Small Rectangular Prism***

## ***#1***

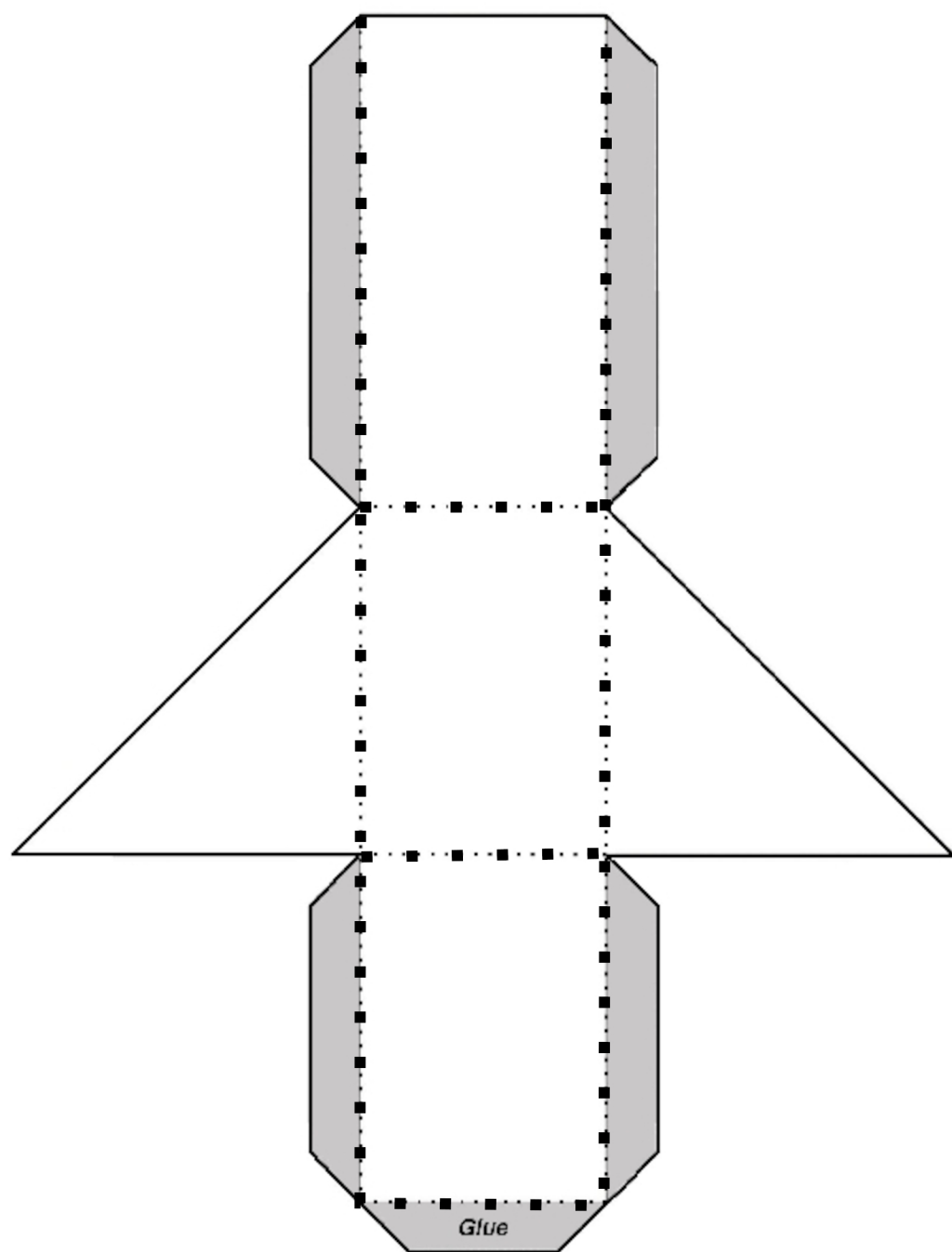


# ***Small Rectangular Prism***

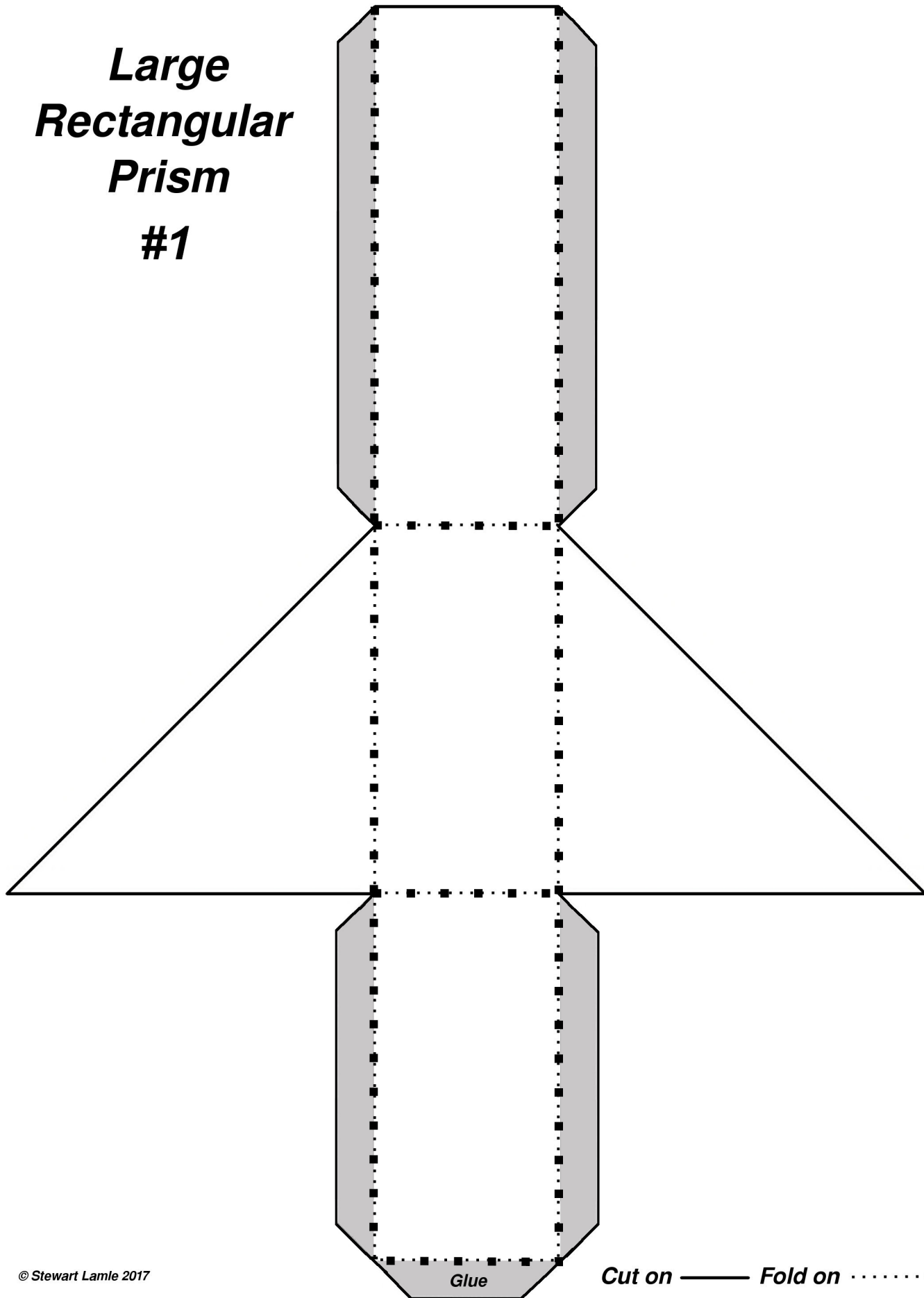
## ***#2***



# *Medium Rectangular Prism*



***Large  
Rectangular  
Prism  
#1***



***Large  
Rectangular  
Prism  
#2***

